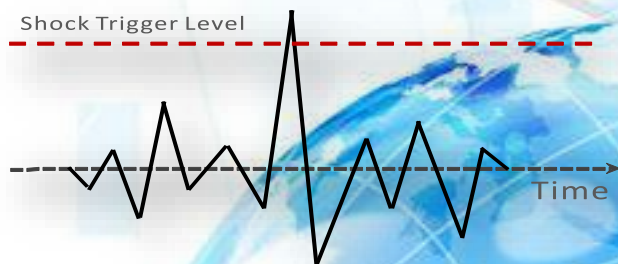
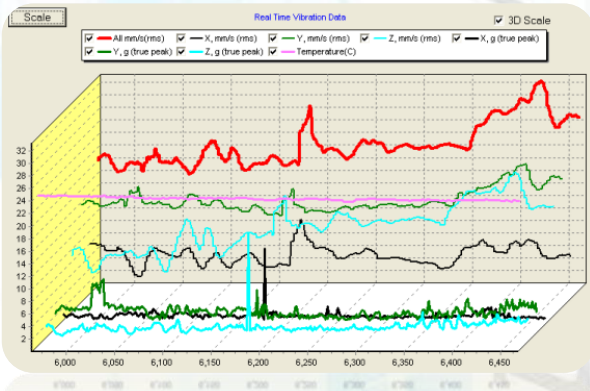


BT-2113R

Spindle Eyes

Product Features:

- Spindle Impact Detection
- Abnormal Event Recording
- Three Axis Accelerometer
- Vibration Output DC 0-10V
- Record Size up to 12,000
- Sensor IP 67 Waterproof
- Hi-Speed DSP & Hi-Speed A/D
- DIN-Rail
- Meet ISO 2954



True Peak (Impact) Detection

Software Utility:

- Alarm Level Configurations
- Real Time Vibration Monitor
- Trend Chart Display
- Excel Data Format
- Impact Record Report
- Password Protection
- Windows Graphical UI
- System ID Configurations

Specifications:

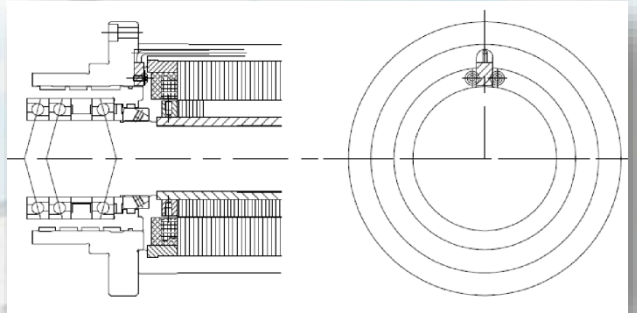
Impact Range	0.0 - 20.0G (true peak)
Dimensions	105mm x 70mm x 45mm
Weight	200 gram
Accelerometer Sensitivity	400.0 mV/G
Power requirement	DC 22V - DC 26V
Power Consumption	< 2.0 Watt.
Sensor Cable Check	Failure Detection
Sensor Cable Length	Up to 15 meters
Vibration Range	0.0 - 150.0mm/s (RMS)
Frequency Range	10Hz - 1KHz (ISO 2954)
Data Interface	RS-232 (38,400 bps)
Memory Lifetime	EEPROM (>100 years)
Measurement Axis	Three Axis
Data Acquisition Rate	30KHz(max.)
Impact Trigger Level	Programmable
Vibration. DC Output	DC 0V - 10V(20mA)
Data Size	12,000 records
Operating Temperature	5°C - 85 °C
Memory Buffer	Circle Buffer

Event Report:

Recorded Vibration Data			
Graph <input type="text"/> Configure			
1	Event Name	Date & Time	Value
2	Vibration Over	2007/02/12 09:03:21	V=8.97 mm/s
3	Spindle ON	2007/02/13 09:21:12	V=3.12 mm/s
4	Spindle OFF	2007/02/13 09:47:00	T=31.7 °C
5	Shock	2007/02/14 14:13:18	12.71 g (true-peak)
6	Shock	2007/02/14 14:35:11	16.33 g (true-peak)
7	Vibration Over	2007/02/14 15:31:01	V=9.31 mm/s
8	Shock	2007/02/14 15:11:51	11.21 g (true-peak)
9	Spindle ON	2007/02/15 09:11:59	V=2.31 mm/s
10	Shock	2007/02/15 10:13:11	15.54 g (true-peak)
11	Vibration Over	2007/02/15 14:44:58	V=9.65 mm/s
12	Spindle OFF	2007/02/15 15:12:11	T=35.1 °C
13	Spindle ON	2007/02/16 10:31:29	V=4.32 mm/s
14	Vibration Over	2007/02/16 11:53:19	V=9.88 mm/s
15	Vibration Over	2007/02/16 14:13:11	V=8.91 mm/s
16	Shock	2007/02/16 15:31:10	10.82 g (true-peak)
17	Vibration Over	2007/02/16 15:33:21	V=8.12 mm/s
18	Spindle OFF	2007/02/16 16:01:01	T=36.8 °C
19	Shock	2007/02/17 10:13:51	13.17 g (true-peak)
20	Shock	2007/02/17 10:42:45	15.71 g (true-peak)
21	Spindle ON	2007/02/17 10:55:55	V=8.92 mm/s
22	Shock	2007/02/17 11:03:22	10.12 g (true-peak)
23	Vibration Over	2007/02/17 15:01:42	V=9.98 mm/s
24	Spindle OFF	2007/02/17 15:03:54	T=37.5 °C
25	Shock	2007/02/18 11:54:58	15.28 g (true-peak)
26	Spindle ON	2007/02/18 13:22:29	V=9.12 mm/s
27	Vibration Over	2007/02/18 13:43:21	V=8.13 mm/s
28	Shock	2007/02/18 14:33:49	11.18 g (true-peak)
29	Shock	2007/02/18 14:48:37	13.71 g (true-peak)

To Excel File

Installation:



BALTech Co. Ltd.

衡碁科技有限公司

No.122, Zhongzheng 2nd Rd., Hukou Township,
Hsinchu County 303, Taiwan (R.O.C.)

[Http://www.baltech.com.tw](http://www.baltech.com.tw)

Tel:+886-3-590-8611 (representative)

Fax:+886-3-590-3983



BALTech